



Campaign Annandale
ACCELERATING THE POSSIBILITIES



GARY'S BIRTHDAY was approaching, and as they did each year, his parents planned a small party for him. A few friends, balloons, and of course, cake. Nothing too fancy. Gary was turning 47, and his parents were in their late 70s. Caring for Gary was a joy, but also an increasing challenge for them. Gary was born with Down syndrome and depended upon them for assistance in many aspects of his life. Although his special needs were considered moderate, they knew they would soon be unable to continue as his caregivers.

▶ **WITH INCREASING CONCERN ABOUT GARY'S FUTURE—BOTH HIS NEED FOR MEDICAL CARE AND LIFE ASSISTANCE, BUT ALSO HIS ZEST FOR LIFE—THEY HAD BEGUN SEARCHING FOR OPTIONS.**

When they discovered Annandale Village, they knew they'd found exactly what they needed— an exceptional place where men and women like Gary can live the rest of their lives while receiving the medical, personal, social and vocational support they need from expert and dedicated caregivers. They'd found something else, too — **peace of mind.**



REMARKABLE

Annandale Village is a remarkable organization. That's how families who depend upon its services describe it; how its dedicated staff and volunteers regard it; and most importantly, what its impact is on the lives of those with developmental disabilities and acquired brain injuries who rely upon it. Annandale Village is truly remarkable. How else would one describe an organization offering a full continuum of loving care to those with intellectual disabilities, providing a life of quality and independence to those who call it home — and peace of mind to loved ones who may not be able to sufficiently care for them?

IT STARTED WITH A DREAM...

Since its founding more than 50 years ago, when Dr. and Mrs. Maxwell Berry sought a place where their daughter with developmental disabilities could live a better life, Annandale Village has continued to meet the same needs of families searching for an environment in which their adult loved ones with developmental disabilities and acquired brain injuries may lead safe, active, productive and healthy lives. With a broad commitment to excellence and an exceptional quality of care, Annandale Village has become an award-winning, nationally recognized nonprofit — and the only nonprofit in Georgia offering

and development disabilities and acquired brain injuries a life-long continuum of service and care.

Annandale Village currently provides warm, caring life assistance to almost 200 Villagers, all of whom are 18 years and older. All Villagers enjoy customized degrees of support and assistance, whether they live in personal care homes, assisted living or skilled nursing care facilities. Annandale Village's beautiful 55-acre wooded campus ensures a rare and full continuum of care throughout each person's life. Each campus structure and space was built and designed to serve its special needs population.

TIME TO REVITALIZE

As remarkable as Annandale Village is, it too has challenges. It must continuously strive to serve its growing special needs population, one that has nearly doubled over the last decade alone. In recent years, through generous community support, Annandale Village constructed two new assisted living facilities and expanded its skilled nursing center — crucial additions to its services for Villagers with severe medical and age-related issues. At its essence, Annandale Village is a vibrant community, and the heart of this community is the Patricia M. Brown Center for

Programs. This Program Center is where Villagers learn, train, sing and dance. It's the social and educational hub of the campus. It's the life of the Annandale Village community.

In the nearly three decades since the Program Center was built, significant progress in education, research and program development has advanced the entire field of developmental and intellectual disabilities.

Knowledge has increased. Training is more thorough and treatments more robust.

Facilities are now high-tech and multi-functional. Expectations for individualized care are greater.



THIS IS CAMPAIGN ANNANDALE

\$5 MILLION

A dedicated effort to raise \$5 million in philanthropic support will enable it to do just that. Funds raised from families, friends and organizations will support a major renovation and expansion, revitalizing the heart of Annandale Village to a responsive and welcoming environment, and restoring the Program Center to the vibrant campus-life role it is intended to play.

PROJECT DESCRIPTION

One of Annandale Village's most distinctive and appealing qualities is its focus on independence — the independence of Villagers to be accepted and secure; the independence to age in place and form life-long relationships; and the independence to nurture their strengths, talents and interests. Whether taking vocational classes, playing basketball, pursuing music lessons, learning to dance or attending a movie, the Program Center is where Villagers choose to go and

do, where they nurture their independence. It's where much of their life happens.

Thirty years of heavy use have taken a toll on the Program Center while new technologies, materials and sustainable construction techniques have passed it by. But that's about to change. Annandale Village's visionary strategic plan calls for a major redesign, upgrade and expansion to the Program Center to be funded through private support. Backed

by committed lay and professional leadership, Campaign Annandale seeks to raise \$5 million in philanthropic gifts from the community to cover the costs of the project.

Once completed, the revitalized Program Center will offer both current residents and Villagers attending day programs a more useful, appropriate and meaningful environment in which to pursue their independence and realize their life goals.

THE PROGRAM CENTER

The place where most Villagers spend the bulk of their day engaged in a dynamic mix of recreational, educational and social programs no longer functions at its best. The once vibrant building is now unable to fully accommodate its goals. Its aging, inefficient and limited spaces are ill-suited to the advances that have taken place in serving those with developmental disabilities.

THE PROGRAM CENTER MUST ADAPT TO SUCCEED.

It must be restored, improved and expanded, both to ensure the safety and customized care for Villagers, and to provide needed space and accessibility for residents and visitors alike.

THE FAÇADE

The Program Center revitalization will begin by transforming its current uninviting and confusing exterior into one that is both attractive and welcoming, while also bringing the building in line with the campus aesthetics. A new main entrance will encourage Villagers, their family members and the broader community inside.

ENTRANCES AND HALLWAYS

Touch-free entrance technology and ADA-compliant seating in interior hallways will naturally encourage groups to socialize. Soothing color and lighting, along with noise-controlling elements, will support Villagers' special sensory needs. Touch-free technology at building entrances and in new bathrooms will increase accessibility and decrease the spread of germs.

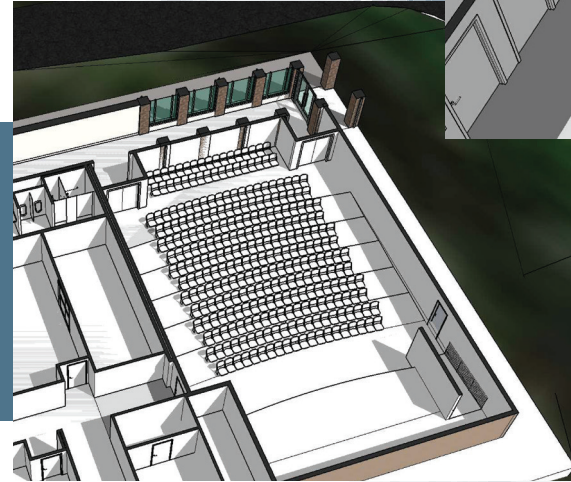


THE EXPANSION

Approximately 2,000-square-feet of new space will be added to the Center's current 28,000-square-foot footprint. The existing gym and the Justis Blackstock Fitness Center will remain largely untouched.

A PERFORMANCE CENTER

An attractive new 300-seat ADA-compliant auditorium will provide a dynamic space for Villagers to practice and perform live shows, while doubling as a convenient place to host community meetings and events.



A TEACHING KITCHEN

Villagers will learn new life skills in the planned instructional kitchen, supporting their preparation for off-campus jobs—now the preferred focus over the workshop model.

NEW SPACES

Some of the Center's most popular spaces—the **computer lab, art, music and sensory rooms**—will be redesigned, expanded and updated with new equipment.

OFFICE SPACES

One-on-one case-manager rooms will also provide Villagers with more appropriate space for case-manager meetings. Staff office space will be added to the side and back of the gymnasium, increasing Villagers' interactions with staff.

MULTI-PURPOSE ROOMS

The dedicated workshop will be replaced with new multi-purpose rooms to evolve with Villagers' needs. A combination of smaller rooms and larger rooms with adjustable partitions will support environments conducive to the personalized attention that enables Villagers to do their best work.

POOL UPDATES

New windows will allow natural light in the existing indoor pool.



There are few—if any—communities in the United States offering the exceptional quality of life and care for adults with developmental disabilities and acquired brain injuries that Annandale Village does.

WE NEED YOUR HELP

As a private, non-profit organization, we must occasionally call upon those who know us best to support special funding initiatives to help preserve this quality. But the benefits of advancing Annandale's mission extend far beyond those with a direct relationship to it. With

special needs populations growing and living longer, and the demand for quality care facilities exploding, every citizen—and every community—benefits by advancing our mission. Where would you turn if your adult loved one with developmental disabilities or acquired brain

injuries needed a home? Annandale Village is a rare and remarkable organization. **The Board, Villagers and staff turn to you today to invite your support of Campaign Annandale.**



Annandale
VILLAGE

annandale.org/capitalcampaign